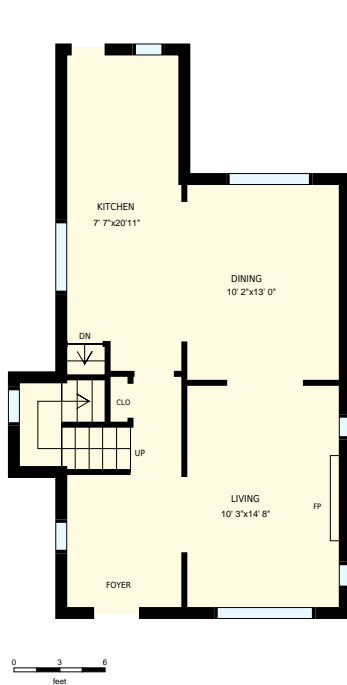


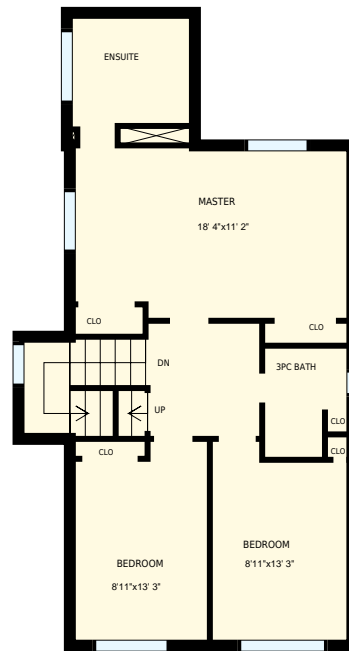


370 Northcliffe Blvd, Toronto, ON

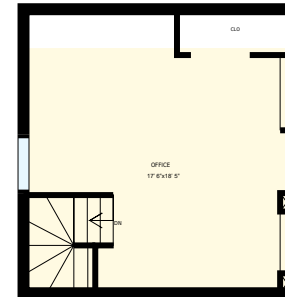
Total Exterior Area Above Grade 1885 sq. ft.



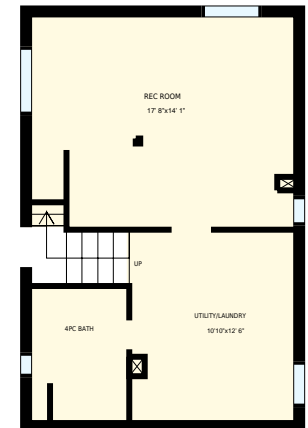
Main Floor
Exterior Area 724 sq. ft.



2nd Floor
Exterior Area 818 sq. ft.



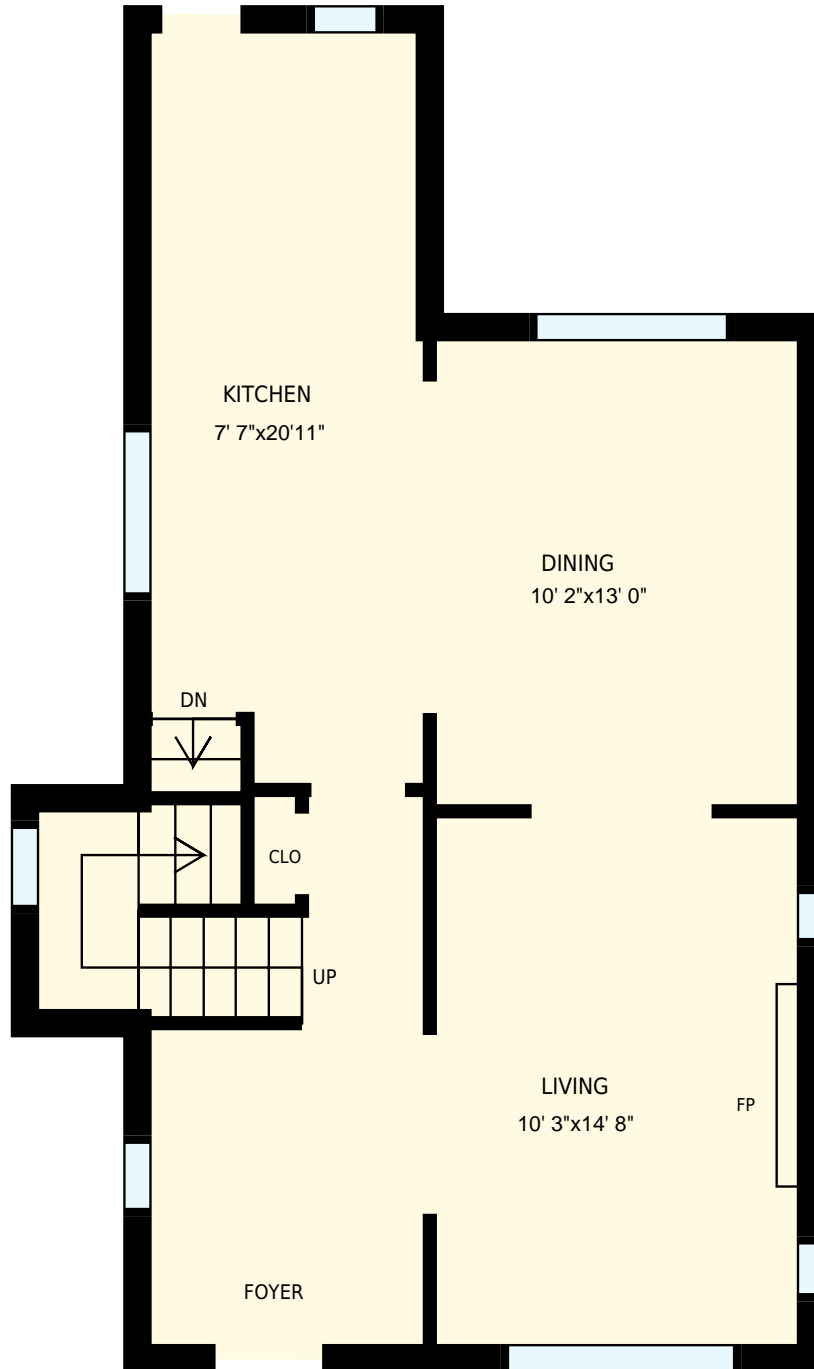
3rd Floor
Exterior Area 342 sq. ft.



Basement

All room dimensions and floor areas must be considered approximate and are subject to independent verification. For method of measurement please see <https://youriguide.com/measure/>.

PREPARED FOR:

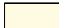


370 Northcliffe Blvd, Toronto, ON

PREPARED FOR:

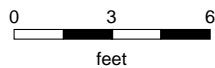
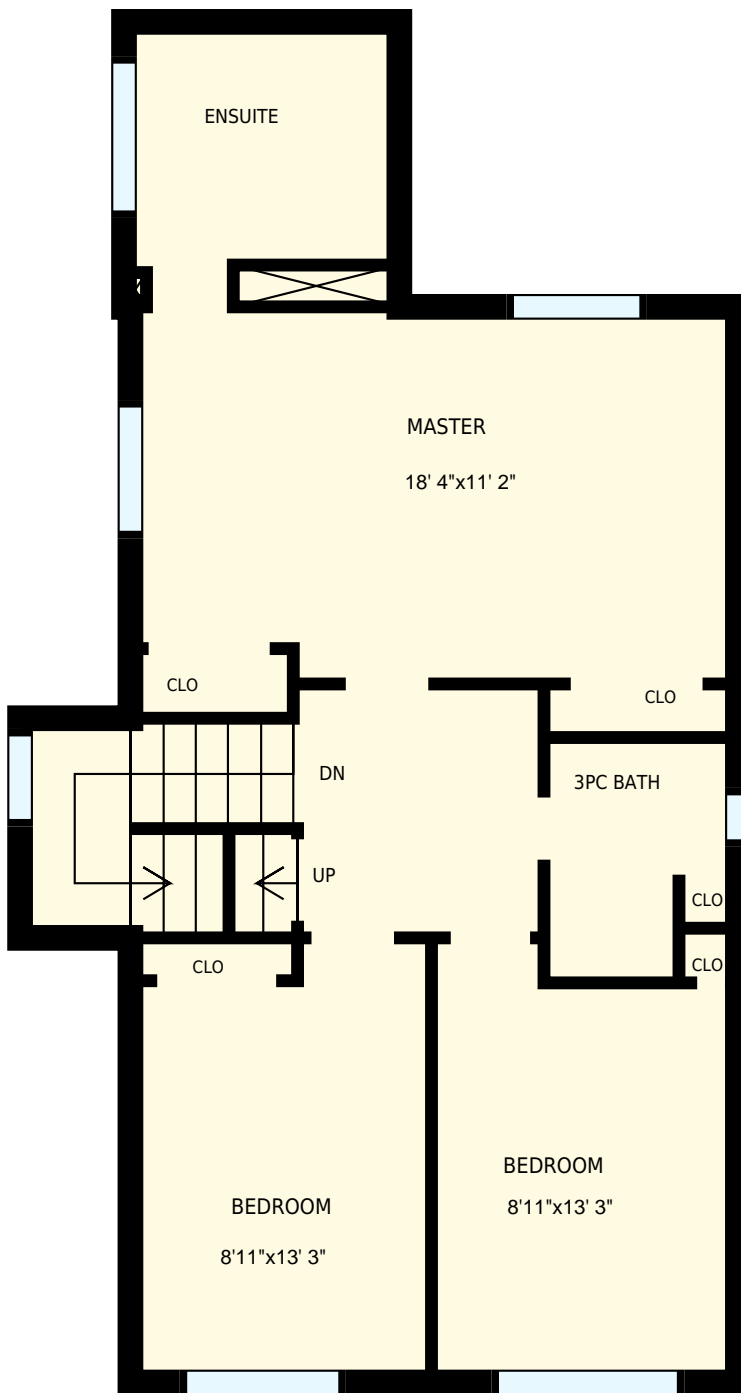
Main Floor

Interior Area 609 sq. ft.
Exterior Area 724 sq. ft.

 Included Area

PREPARED ON:
May, 2017

All room dimensions and floor areas must be considered approximate and are subject to independent verification. For method of measurement please see <https://youriguide.com/measure/>.

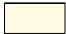


370 Northcliffe Blvd, Toronto, ON

PREPARED FOR:

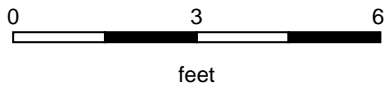
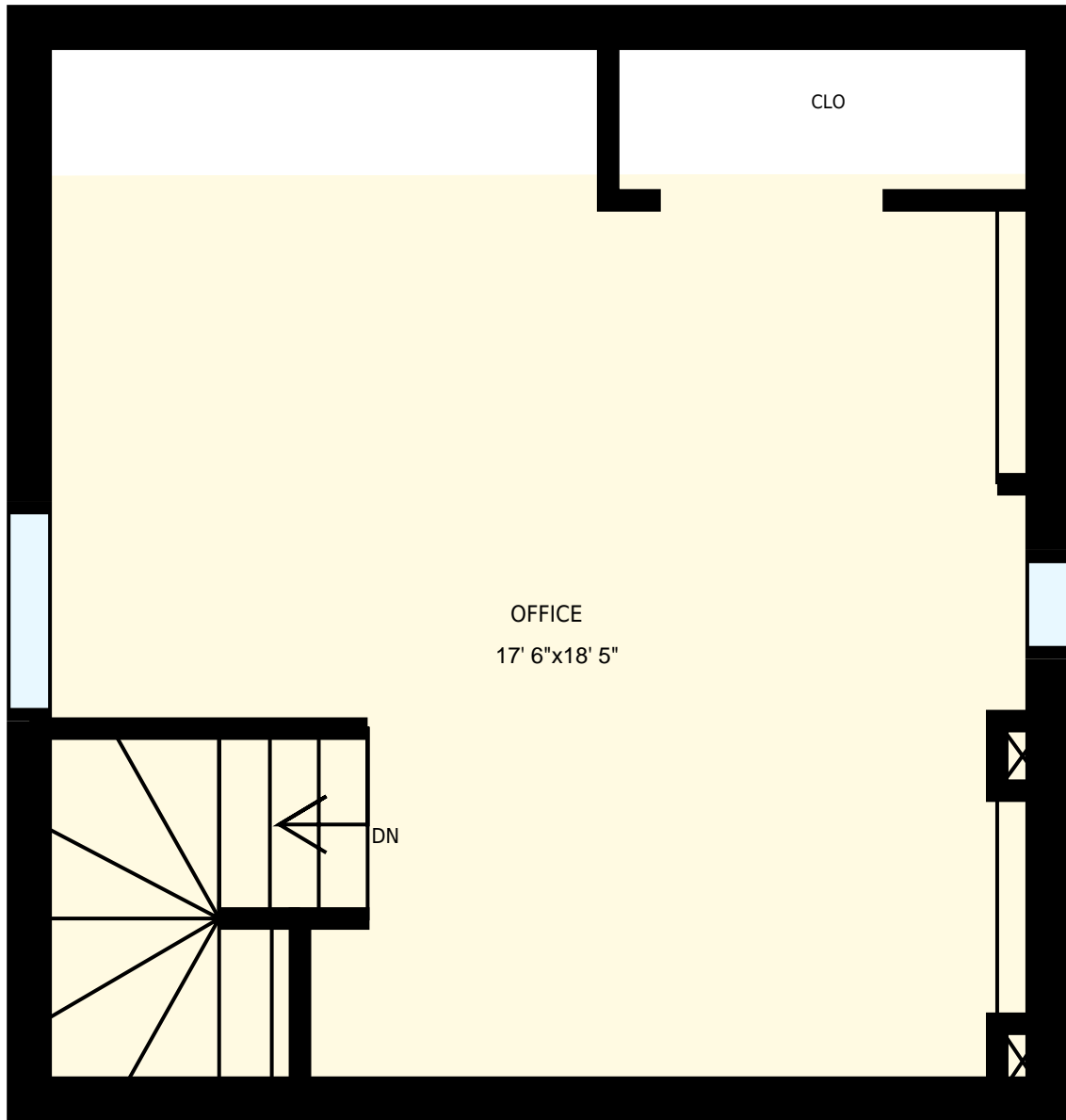
2nd Floor

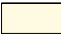
Interior Area 693 sq. ft.
Exterior Area 818 sq. ft.

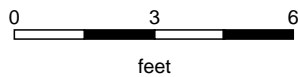
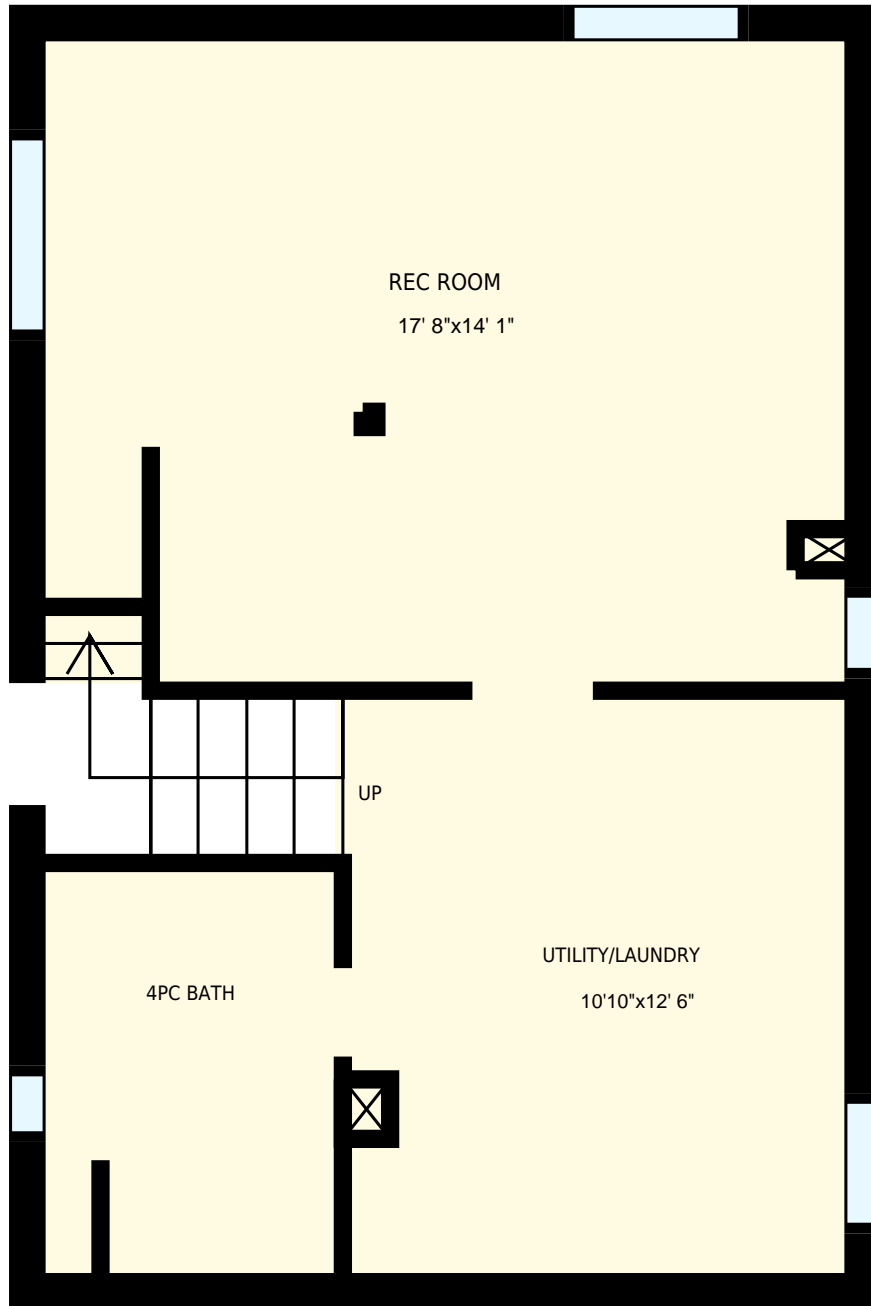
 Included Area

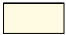
PREPARED ON:
May, 2017

All room dimensions and floor areas must be considered approximate and are subject to independent verification.
For method of measurement please see <https://youriguide.com/measure/>.



370 Northcliffe Blvd, Toronto, ON		PREPARED FOR:	
3rd Floor			
Interior Area	277 sq. ft.	 Included Area	PREPARED ON:
Exterior Area	342 sq. ft.		May, 2017
<small>All room dimensions and floor areas must be considered approximate and are subject to independent verification. For method of measurement please see https://youriguide.com/measure/.</small>			



370 Northcliffe Blvd, Toronto, ON		PREPARED FOR:
Basement		
Interior Area	453 sq. ft.	PREPARED ON:
Exterior Area	 Included Area	May, 2017
All room dimensions and floor areas must be considered approximate and are subject to independent verification. For method of measurement please see https://youriguide.com/measure/ .		